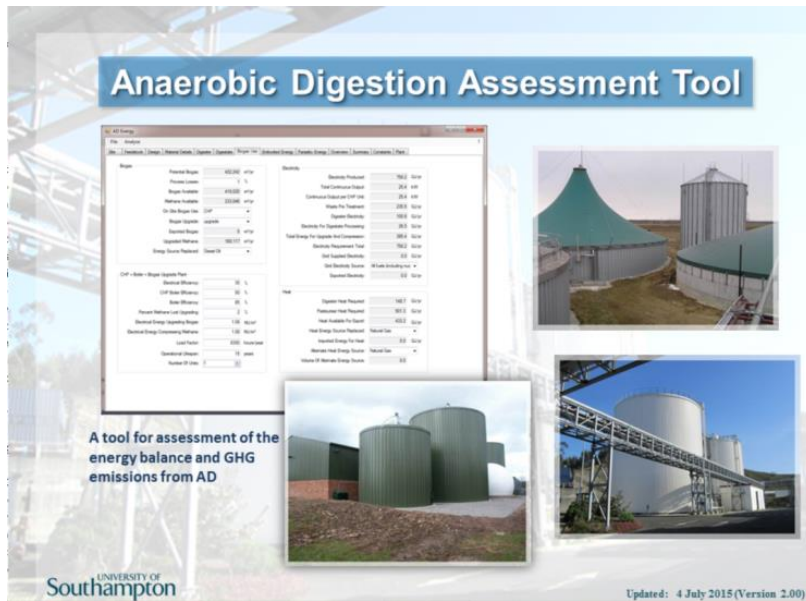


Anaerobic Digestion Assessment Tool



Based on original research and literature studies carried out between 2004-2015 by the Bioenergy and Organic Resources Research Group at the University of Southampton.

Spreadsheet version of model prepared for the FP6 CROGEN project (SES6-CT-2004-502824) and updated for RCUK RELU (RES-229-25-0022). Software implemented with funding from FP7 VALORGAS (241334), BBSRC ADNet (BB/L013835/1) and IEA Task 37 (UK). Main contributors Prof Charles Banks, Dr Andrew M Salter, Dr Antony C Lock, Dr Sonia Heaven, Prof Michael Chesshire and Angela Bywater.

Research supported by:

Project



www.cropgen.soton.ac.uk



www.ad4rd.soton.ac.uk



www.valorgas.soton.ac.uk



www.anaerobicdigestionnet.com

Funder



<http://cordis.europa.eu/fp6>



www.relu.ac.uk



<http://ec.europa.eu/research/fp7>



www.bbsrc.ac.uk



www.iea-biogas.net